

Premium Gasoline Improver

A clean fuel system is essential to maintaining maximum fuel efficiency in vehicles with modern gasoline port and direct fuel injection systems. But keeping systems clean is a challenge with today's ethanol fuel blends like E10, E15 and E85. SWEPCO 503 Premium Gasoline Improver eliminates problems by keeping fuel injectors, pumps and other close tolerance components clean. Special chemistry removes gum, varnish, sludge & carbon deposits in fuel systems and upper cylinder areas. Also protects expensive fuel injectors and pumps from mechanical and corrosive wear. Regular use keeps fuel systems in perfect operating condition. Effective for carbureted fuel systems, too.



KEY FEATURES

- Boosts octane level of gasoline
- Protects against harmful deposits & corrosion caused by ethanol blends as high as E85
- Cleans carbon, varnish, gum & sludge from injectors, carburetors, intake valves, piston heads & other fuel system components for improved combustion, maximum fuel efficiency & significantly reduced exhaust emissions
- Plates metal surfaces in fuel systems & storage tanks to prevent mechanical & corrosive wear and damaging rust
- Prevents "phase inversion" which causes absorbed water to shut down engines
- Keeps fuel fresher ... highly effective oxidation inhibitors improve storage stability and reduce octane loss in tanks
- Easy – just add directly to individual or bulk fuel tanks
- Recommended for all types of gasoline engines except marine two-cycle

Keeps fuel systems clean for maximum power & fuel economy . . .



SERVICE & UTILITY FLEETS



DELIVERY TRUCKS



PERFORMANCE CARS

Insure maximum performance and minimize fuel system problems, repairs and fuel consumption with SWEPCO 503 Premium Gasoline Improver

DESCRIPTION & PURPOSE

SWEPCO 503 Premium Gas Fuel Improver is a unique blend of specialized high-temperature-resistant solvents, highly effective rust and corrosion inhibitors and other advanced additives especially formulated to address water, corrosion, contamination and performance issues in engines running on straight gasoline or gasoline/ethanol blends as high as E85.

SPECIAL ETHANOL CHALLENGES

Most vehicles run on some form of ethanol today. Ethanol is alcohol that comes from processing corn, barley, wheat, sugar cane and other agricultural crops. While ethanol is a renewable energy source, it presents a number of challenges when blended with gasoline. And higher ethanol blends, such as E15 and E85, present problems that even premium gasoline additives aren't formulated to resolve:

Water -- Ethanol absorbs water as it sits in a fuel tank ... the more ethanol, the more water. If the percent of water reaches 0.5% it can trigger a phenomenon called "*phase inversion*", where the water and ethanol in the fuel separate from the gasoline and drop to the bottom of the tank. This can prevent an engine from starting or stop a running engine.

Corrosion -- Without extra protection, the increased water content in ethanol causes corrosion and rust in fuel systems.

Reduced Efficiency -- While ethanol increases octane levels when added to gasoline, it contains only about 66% of the energy of gasoline, so it degrades net fuel efficiency.

Less Stable in Storage -- Gasoline/ethanol blends lose octane levels and degrade as they age, staying fresh for only about 90 days. Use of aged fuel in automotive engines can increase fuel consumption, carbon deposit formation, carbon monoxide and hydrocarbon emissions.

BENEFITS OF USE

- Boosts octane maximum allowed by law for highway fuels
- Reduces ethanol related problems
- Provides extra rust & corrosion protection
- Keeps water in suspension to prevent "*phase inversion*"
- keeps fuel fresh longer
- Keeps fuel systems clean
- Insures maximum power & fuel economy
- Removes varnish, gum, sludge and carbon from injectors, intake valves & piston heads
- Helps prevent detonation, pre-ignition, pinging & knocking
- Lubricates upper cylinder area to reduce wear
- Reduces recession of non-hardened exhaust valve seats in older engines
- Helps prevent injector & injector pump wear
- Reduces tailpipe NOx emissions levels
- Won't overheat, warp, burn exhaust valves
- Won't harm catalytic converters, oxygen sensors or turbo chargers

RECOMMENDED FOR

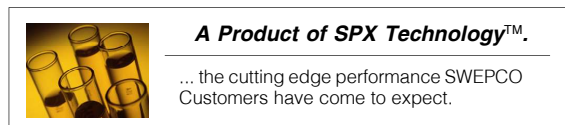
Add to pure gasoline or E10, E15 or E85 ethanol blends used in all types of four cycle gasoline engines and all two cycle gasoline engines (except marine engines), whether carbureted, port fuel injected or direct injected.

TREATMENT RECOMMENDATIONS

Add directly to fuel tanks before filling. One 12-ounce bottle (355 ml) of SWEPCO 503 treats up to 30 gallons (114 liters) of gasoline or ethanol. One gallon treats 333 gallons. One liter treats 333 liters.

PACKAGING

Available in 55-gallon (205 liter) drums, 5-gallon (19 liter) pails and cases of 24 twelve-ounce (355 ml) bottles.



Southwestern Petroleum Lubricants, LLC

Fort Worth, Texas • Phone: (817)332-2336 • Fax: (800)736-5823 • Web: www.swepcolube.com